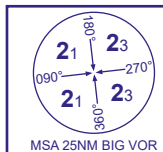
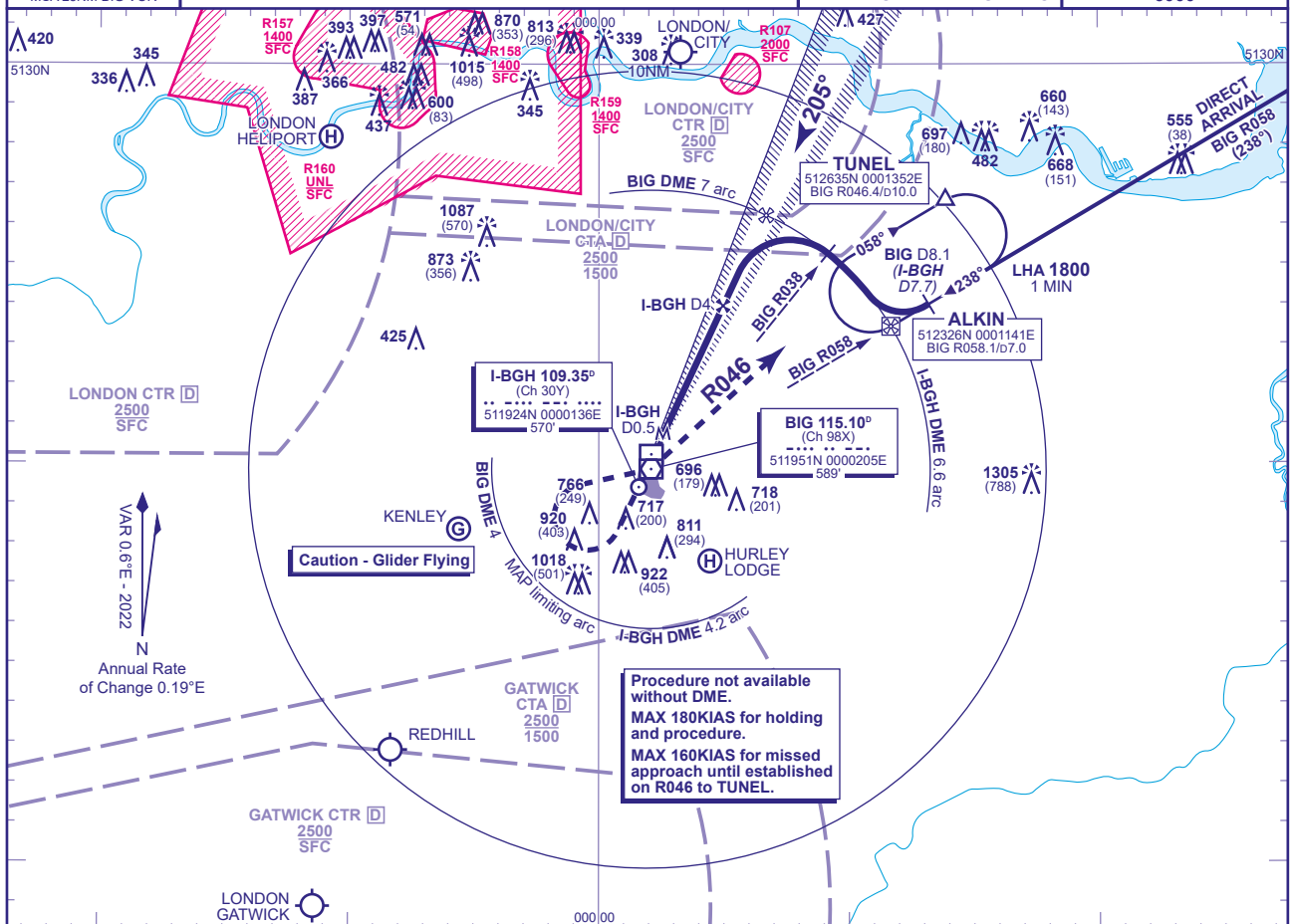


INSTRUMENT APPROACH CHART - ICAO

BIGGIN HILL
LOC/DME/VOR
RWY 21
(ACFT CAT A,B,C)

APP	129.405	BIGGIN APPROACH	AD ELEVATION	584
TWR	134.805	BIGGIN TOWER	THR ELEVATION	517
RAD	132.700, 133.455, 128.025	THAMES DIRECTOR	OBSTACLE ELEVATION	1305 AMSL (788) (ABOVE THR)
			BEARINGS ARE MAGNETIC	

TRANSITION ALTITUDE
6000

RECOMMENDED PROFILE Gradient 5.24%, 318FT/NM

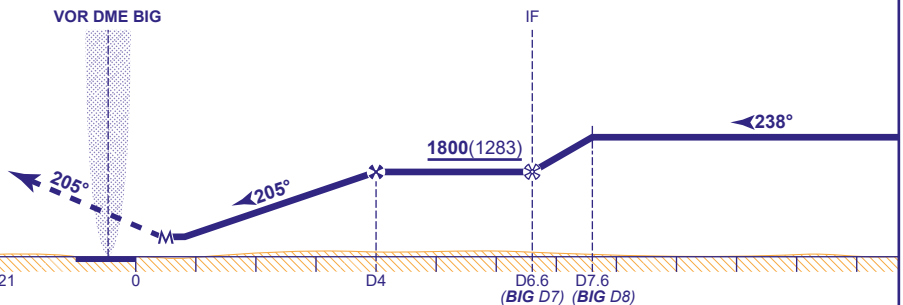
DME I-BGH	3	2	1
ALT(HGT)	1520(1003)	1200(683)	890(373)

Arrival not below MSA.

MAPt I-BGH DME 0.5

Climb straight ahead to **not above 2000**.
At I-BGH DME 2 turn right to **VOR BIG**
continuing climb as necessary to **2000**.
Leave **VOR BIG** on R046 to TUNEL
(**BIG VOR** R046 DME 10) to enter hold
or as directed.
Note: Remain within I-BGH DME 4.2 or
BIG DME 4 during right turn to
VOR DME BIG. MAX 160KIAS until
established outbound R046 to TUNEL.

VOR DME BIG



DME I-BGH zero ranged to THR RWY 21

Aircraft Category		A	B	C	Rate of descent	G/S KT	160	140	120	100	80
OCA (OCH)	Procedure	840(323)	840(323)	840(323)		FT/MIN	850	740	640	530	420
VM(C)OCA (OCH AAL)	Total Area	1150(566)	1350(766)	1450(866)							

NOTE 1 Initial arc track at BIG R058 is 328°M, Final arc track at BIG R038 is 308°M. Rate of change of arc track 8.2°/NM.**NOTE 2** Procedural arrivals not normally permitted when 'Thames Director' is available.**NOTE 3** Aircraft will normally be radar vectored by 'Thames Director' direct to final approach at **1800**, to be established not later than I-BGH DME 5.**NOTE 4** Aircraft which need to lose significant altitude shuttle in ALKIN hold as directed by ATC.**NOTE 5** ATC will normally require aircraft to hold **not below 2000**. MAX 180KIAS for holding.

CHANGE (13/24): BIG VOR/DME RECALIBRATED. RADIALS REVISED.